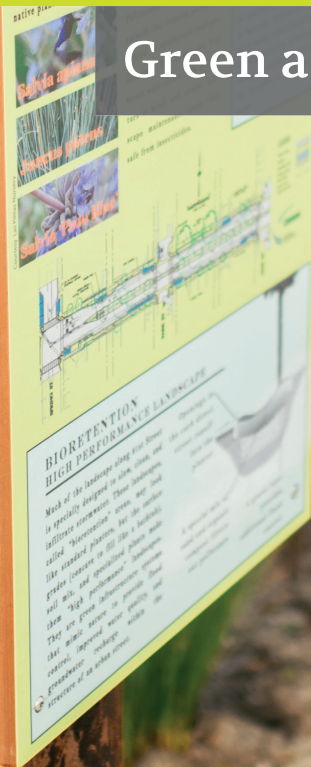




# Cannon

Green and Complete Streets





# Green and Complete Streets



Green and Complete Streets are revolutionary models for street design that maximize ecological sustainability, user mobility, and community benefits within the public street realm. Integration of multi-use routes, traffic-calming features, and aesthetic improvements are just a few of the ways these innovative designs redefine our perspective of street infrastructure. Green Streets work by mimicking natural landscape functions to mitigate the impacts of urbanization such as flooding; damage to riparian systems; declining water quality in lakes, streams, and coastal waters; and decreased groundwater recharge. Complete streets re-envision the public Right-of-Way as a place shared by users of all abilities and modes of transportation.

Cannon works with public entities to design Green and Complete Streets that fit within their unique communities and watershed context. We have the technical design expertise and hands-on construction management experience needed to successfully integrate a complex set of functions and user amenities including bike lanes, pedestrian considerations, and functional seating areas, just to name a few, within the often constrained limits of public streets. Our multidisciplinary teams excel in fusing the functionality of public infrastructure with the beauty of a living landscape to create public spaces that invite, educate, and inspire.



## Features & Benefits

- LID Stormwater Management
- Pavement Reduction
- Pedestrian Safety and Enhancements
- Traffic Calming
- ADA Curb Ramps
- Bicycle Lanes
- Tree Shading



The new-and-improved 21st Street is a valued asset for the City of Paso Robles. The Cannon team embraced the communities' vision for the corridor, creating a regional green/complete street success story and a blue print for Paso's future street development.

**-Matt Thompson,**  
Wastewater Resources Manager, City of Paso Robles



# Safe Routes to School

Safe Routes to School (SRTS) is a worldwide movement meant to enable and encourage K-12 students to walk and bicycle to school. Cannon's design team supports SRTS efforts with a wide range of skills and services that include topographic and utility surveys as well as design of ADA-compliant curb ramps, bicycle facilities, traffic calming measures, and pedestrian safety and mobility features.



## Features & Benefits

- Bicycle Lanes
- ADA Curb Ramps
- Lighted Crosswalks
- Pedestrian Pathways
- Traffic Calming



# Bike Infrastructure



At Cannon, our engineers know road design and are committed to advancing the development of integrated, safe, and enjoyable bicycle infrastructure for all levels of riders. As cyclists ourselves, we realize there is more to bike facility design than lines on a plan. Bicycle infrastructure design has come a long way, but continues to evolve at a rapid pace. To stay at the forefront of cutting edge developments, our designers regularly engage other professionals in the field, attend workshops and specialized training programs, and incorporate the latest multi-modal agency standards as they are released. We also frequently participate in bike advocacy and community planning in addition to hosting several bicycle events annually. Our aim is to encourage people to get out on their bikes for recreation and as an alternative mode of travel.



## Features & Benefits

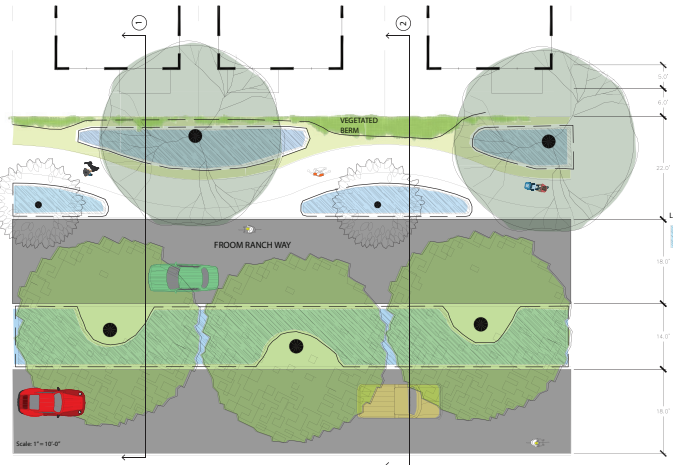
- Class I, II, and III Bike Paths
- Multi-Use Pathways
- Safe Routes to School Pathways
- Community Outreach and Education



# Outreach and Education

Involving stakeholders in the early stages of a project and throughout design helps maintain community support during construction, which is critical to the overall success of a project. All of our designers engage stakeholders during the life of a project and help educate stakeholders, listen to their needs, and incorporate their input into the project work. Our full-service Marketing department supports projects by developing an assortment of graphic materials, developing interpretive signage, organizing events, facilitating workshops, hosting webinars, and campaigning through social media.

**Cannon's team of engineers, landscape architects, and construction managers provided cutting edge design, critical community outreach, and in-the-field design solutions; delivered efficiently and diligently.**  
**- Ditas Esperanza, PE, Capital Projects Engineer, City of Paso Robles**



**Blosser Channel Project/Proyecto del Canal Blosser**  
 Community Meeting/Reunión de la Comunidad

The City of Santa Maria received grant funding from the State Water Resources Control Board to enhance an existing stormwater channel located along Blosser Road between Canal Street and Atlantic Place. The project is an opportunity for the City to maximize use of the current channel to achieve multiple benefits for the community and the natural environment.

La Ciudad de Santa Maria recibió la financiación de subvención por el State Water Resources Control Board para mejorar el uso del Canal existente localizado a lo largo de Blosser Road entre Canal Street y Atlántic Place. El proyecto es una oportunidad de la Ciudad para maximizar el uso del canal y para conseguir beneficios múltiples para la comunidad y el ambiente natural.

**When:** November 12, 2015  
**Quando:** el 12 de noviembre de 2015  
 6:00 - 6:30 Project Presentation/  
 6:30... Community Questions and Input  
 Preguntas de la Comunidad y Aportación

**Where:** Santa Maria Public Library  
**Donde:** Biblioteca del Público de Santa Maria  
 Shepard Hall  
 421 South McClelland Street  
 Santa Maria

[www.cityofsantamaria.org](http://www.cityofsantamaria.org)

## Features & Benefits

- City Council and Municipal Presentations
- Charrettes/Stakeholder Workshops
- Public Informational Exhibits
- Educational Mailers/Flyers
- Webinars
- Interpretive Signage



# Green Construction Management



Cannon has a successful history of taking Green and Complete streets from design through construction. These projects are complex, new to some contractors, and have unique requirements for construction sequencing, utility relocation coordination, materials compaction, and protection of LID features. Our construction management team works closely with our designers to provide valuable insight during the early phases of a project. This collaborative effort results in designs that maximize constructability based on an enhanced understanding of the complex nature of LID projects.



I continue to enjoy working with Cannon staff and recommend them for anyone in need of construction management services.

**-Ditas Esperanza, PE,  
Capital Projects Engineer, City of Paso Robles**



# LID & Sustainable Landscape Design

Underlying our team's dedication to creating sustainable infrastructure is a high level of technical expertise in the area of low impact development (LID) and specially designed landscapes. Our award-winning Green and Complete street team offers technical proficiency, tested LID engineering know-how, in-depth understanding of urban ecological design, commitment to stakeholder participation, and dedication to weaving a community's unique character into the places we help to create. At Cannon, LID technical guidance contributions include developing standard details for municipalities, production of technical guidance documents, developing and presenting technical training on various aspects of LID across respective regions, and providing design services/partnering with design teams on LID demonstration projects.



## Features & Benefits

- Native and Drought Tolerant Plantings
- Water Efficient Irrigation Systems
- High Performance Stormwater Planters
- Permeable Paving Systems
- Recycled and Repurposed Materials
- Revealing Ecological Process
- Educational Interpretation





Reliable Responsive Solutions<sup>SM</sup>

Cannon—[CannonCorp.us](http://CannonCorp.us)

*Toll Free: (866) 750-8165*

